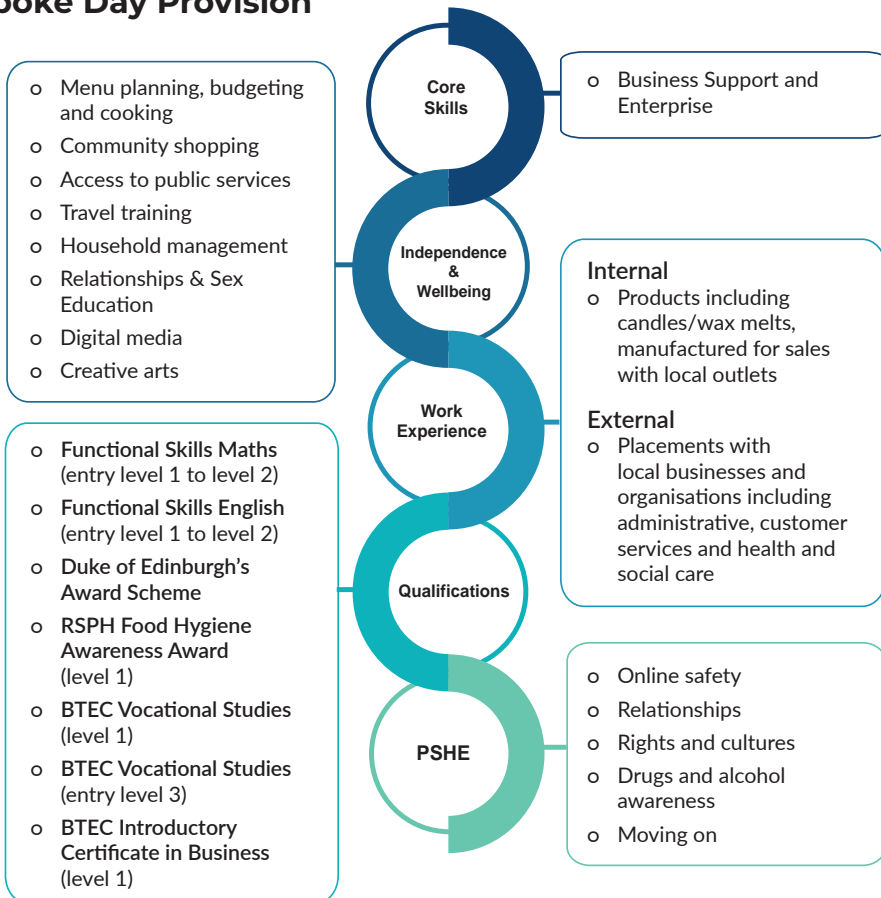


## Bespoke Day Provision



## Entry Requirements

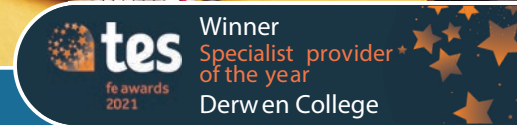
For young people with special educational needs and disabilities, who live in Shropshire and the surrounding areas, including Herefordshire and Powys, and are working at Entry Level to Level 1.

All placements are subject to an assessment by Derwen College staff.

Contact us if you are interested in Business Support and Enterprise.

01691 661234 ext 401 | [admissions@derwen.ac.uk](mailto:admissions@derwen.ac.uk) | [www.derwen.ac.uk](http://www.derwen.ac.uk)

Derwen College, Gobowen, Nr Oswestry, Shropshire SY11 3JA



Business Support and Enterprise Pathway for young people with special educational needs and disabilities

Derwen College Ludlow delivers an exceptional programme for young people (aged between 16 and 25 years) with special educational needs and disabilities, who live in Shropshire and the surrounding areas, including Herefordshire and Powys.

Working in small groups, with bespoke timetabling, students learn valuable skills that transfer easily into the workplace, including:

- o Customer Service skills
- o Money handling and accounts
- o Production of items for direct sales
- o Digital applications
- o Travel Training
- o Safe use of office equipment

In addition to learning vocational skills, students also develop skills and gain confidence in other areas:

- o Social situations – from peers and staff, to members of public, social situations are part of the daily routine.
- o Independence – you will be supported to become more self-reliant through decision-making and increased personal responsibility.
- o Reading – you will experience a wide variety of reading materials including recipes, instructions and fictional works.
- o Writing – your written work will be far-ranging, for example, letters, emails and creative writing.

- o Numeracy – your mathematical skills will be enhanced through exploring travel timetables, measuring ingredients and budgeting for meals.

### Work placements

As your skills progress you will have the opportunity to work with local businesses. You will access varied external work placements with organisations that may include administration, customer services, health and social care.

Alongside work-based learning, students can take part in enrichment activities, such as:

- o Duke of Edinburgh's Award.
- o Art & Crafts.
- o Food preparation, cooking, budgeting and house-keeping duties.
- o Digital media.
- o Community access.
- o Sports.

### Derwen College Ludlow

8-9 The Business Quarter  
Eco Park Road  
Ludlow  
Shropshire SY8 1FD

